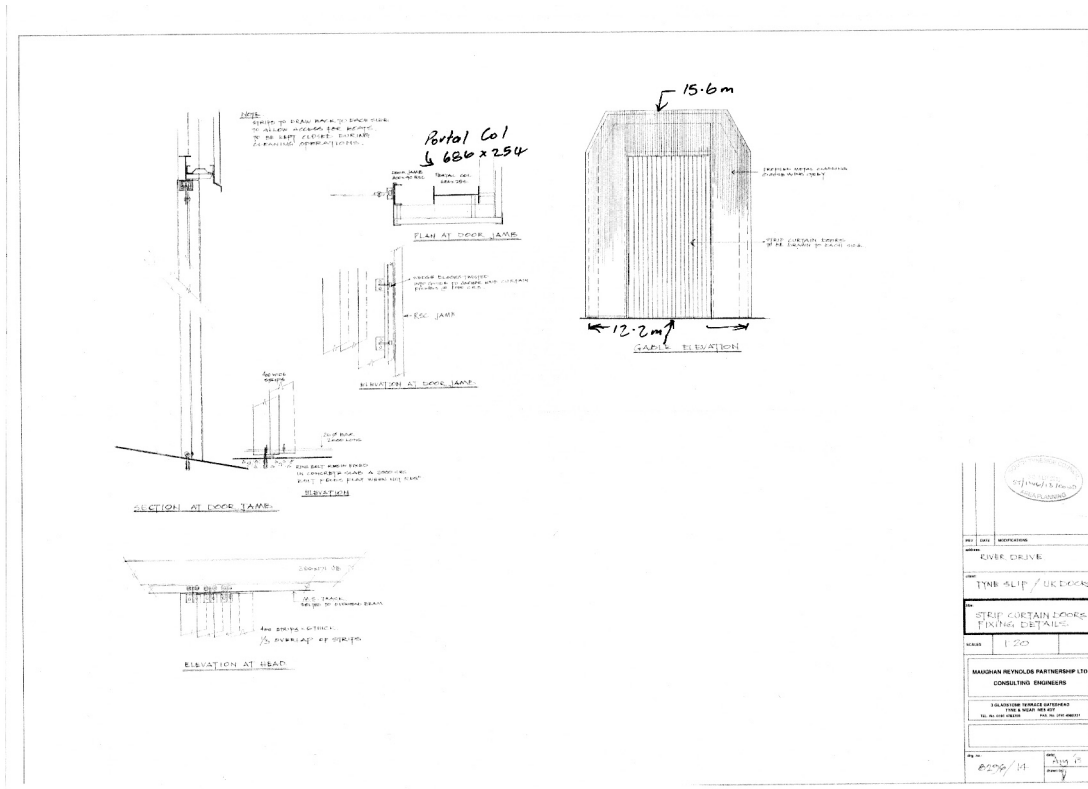


## Explanation of Drawing 8296/14



### Notes

1. There is a clearer picture shown in the accompanying file: drawing829614.pdf
2. In the absence of the full sized drawing (standard plan and elevations) this drawing will have to serve to show the size of the river end of the boat shed.
3. The specification for the portal column is an industry standard of 686mm x 254.
4. The columns and roof beams are clearly outlined in the gable end.
5. The gable end is the one facing the river. In case there is any confusion:-
  - Detail notes on the drawing "strips to draw back to each side to allow access for boats"
  - The section at the door jamb shows the cladding on the downward i.e.north/river end. The alternative would have the cladding on the inside of the building.
  - The apparent use of third angle projection would imply that the door is at the the river end.

This drawing which is the only one available in the public domain clearly indicates that the agent/architect was working from a specification gave the height of the river end of 15.5m.

The arguments given by the planning office that the drawing is not to scale are not supportable and the additional notes added (height 15.6m and width 12.2m) are reasonable projections.