

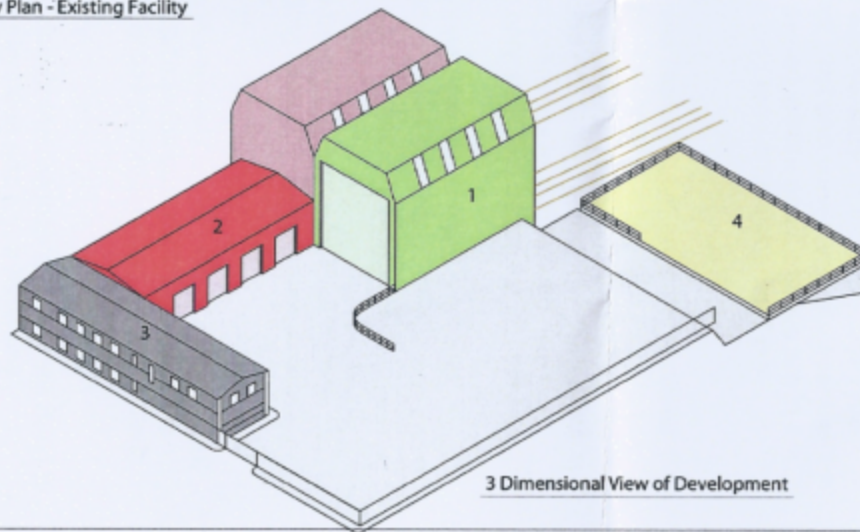


Ordnance Survey Plan - Existing Facility



Ordnance Survey Plan - Proposed Development

(Handwritten)
To 12 MAY 2014



3 Dimensional View of Development

- 1. BOAT REPAIR SHED
- 2. RENEW EXISTING WORKSHOP
- 3. CONSTRUCT NEW OFFICE FACILITY
- 4. EXTEND JETTY