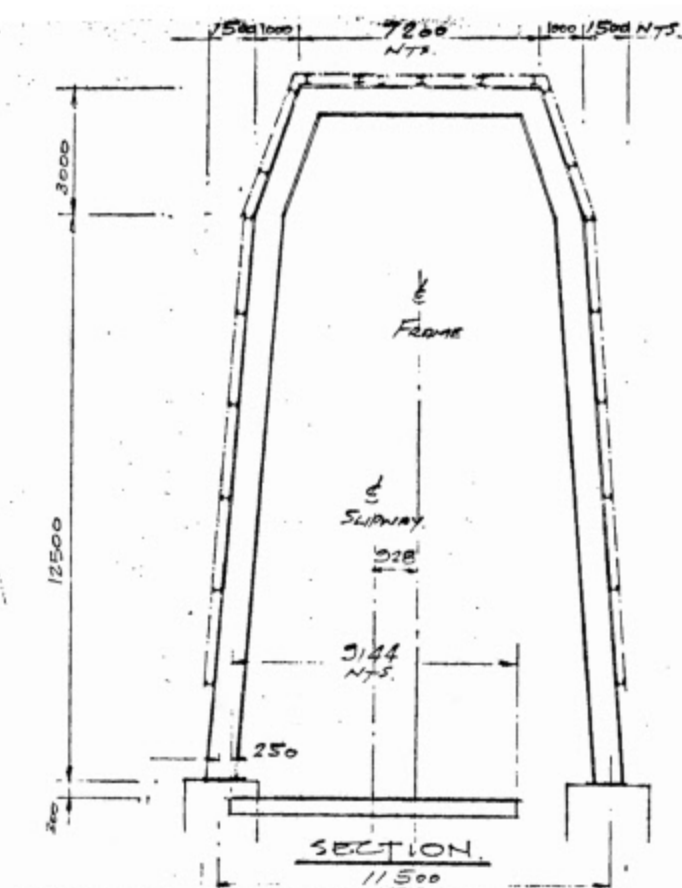
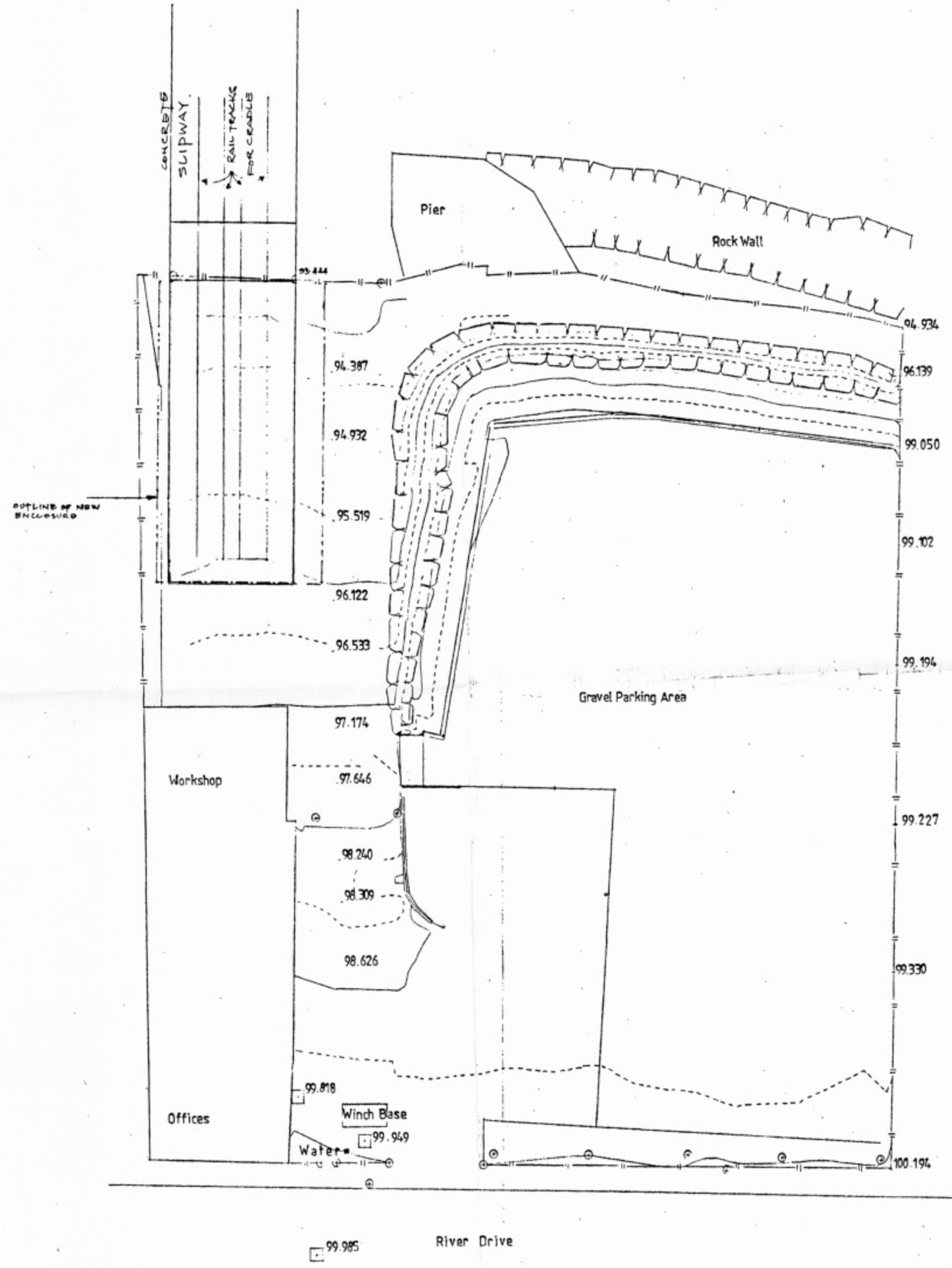
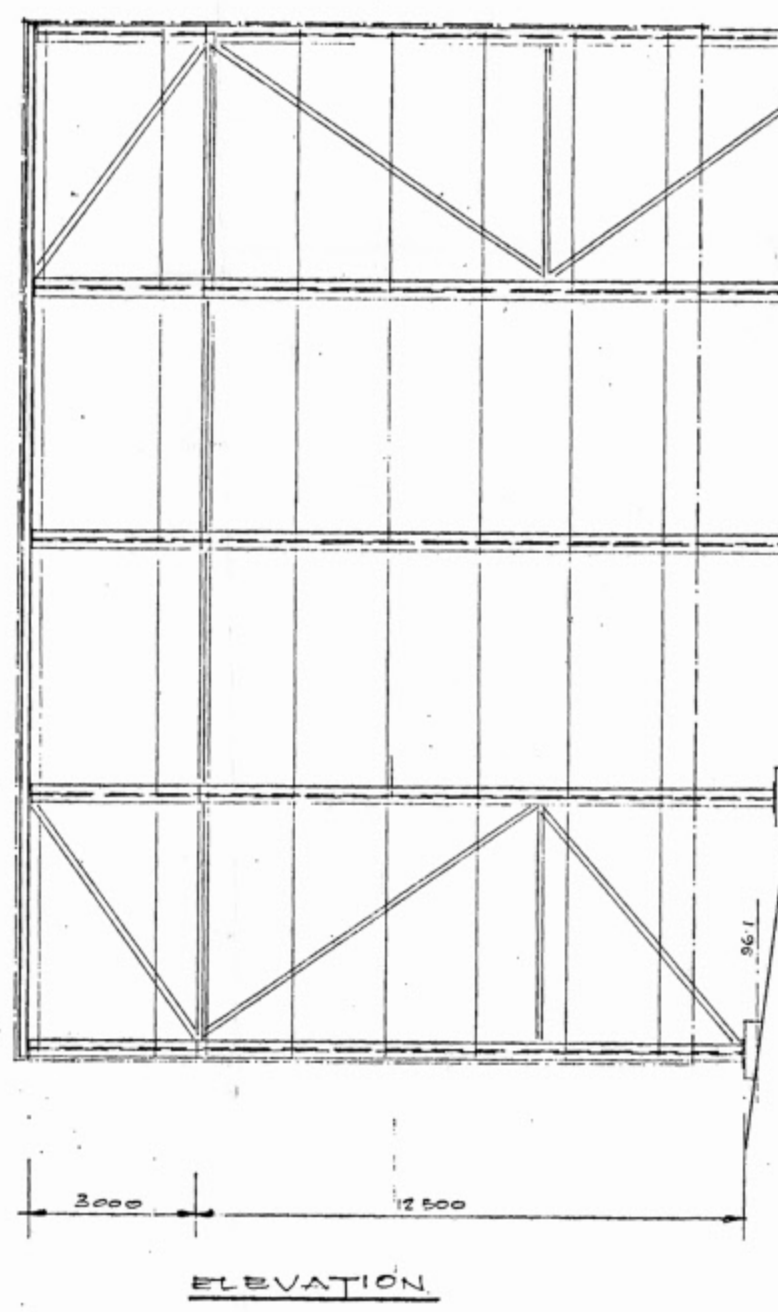
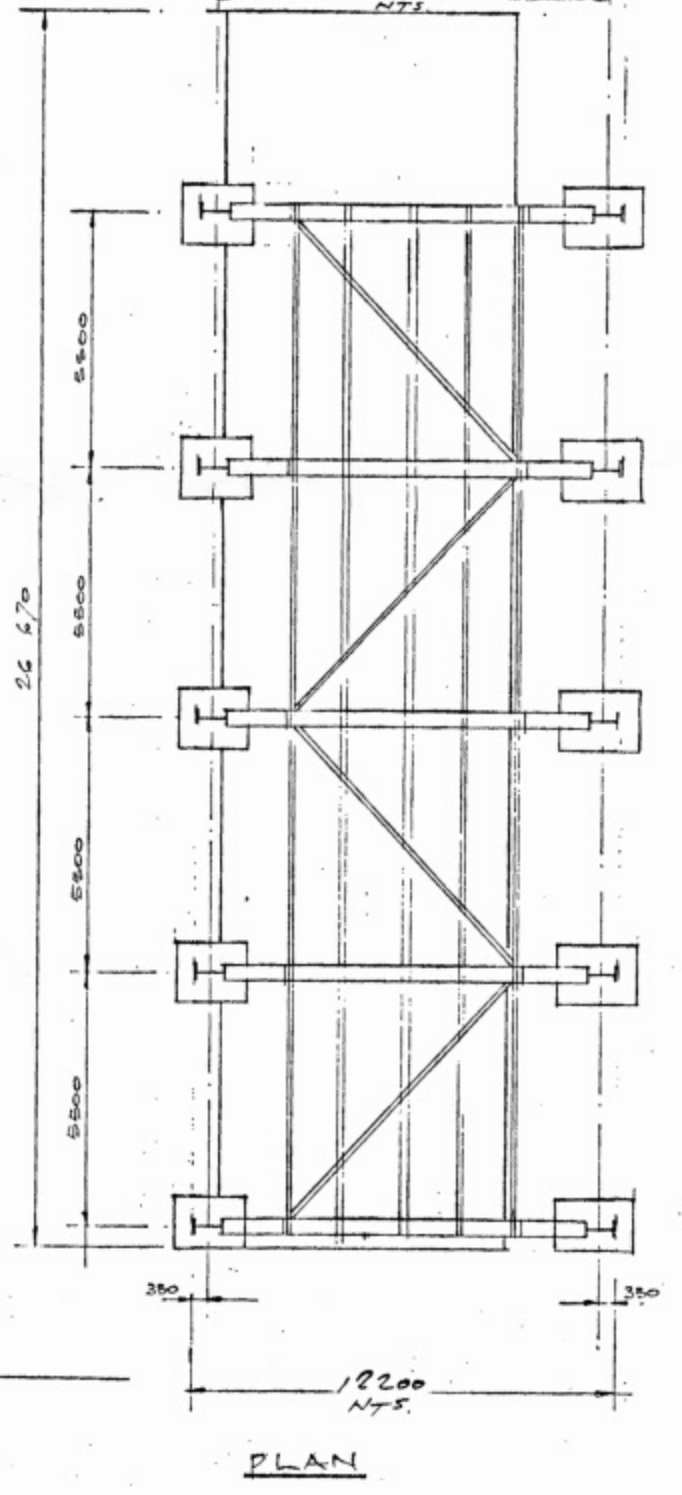


ST/0242/96/UB



NOTES

1. MAIN FRAME 886x254x140 UB
2. ALL BRACING 114.5x63 CWS
3. ALL STEEL PAINTED TWO COATS HIGH BUILD ZINC PHOSPHATE
4. SHEETING TO BE SINGLE SKIN MIDLINE E.C.O.R. OF SIMILAR PLASTIC COATED - COLOUR 10 C 37.
5. BASE PLATES 450x20x700
6. CONCRETE BASES TO BE C 30.0. MIN. COMBINATION BENTONITE



ST 024296 CD
SOUTH TYNSIDE M.B.C.
11 APR 1996
DEVELOPMENT SERVICES

REV	DATE	MODIFICATIONS
A	9/4/96	DIMENSIONS OF FRAME AMENDED
address RIVER DRIVE SOUTH SHIELDS		
client TYNE SLIP ENGINEERING		
title GENERAL ARRANGEMENT		
SCALES 1:200 & 1:100		
MAUGHAN REYNOLDS & PARTNERS CONSULTING ENGINEERS		
15 REGENT TERRACE GATESHEAD TYNE & WEAR NEB 1LU TEL No. 0191 4783355 FAX No. 0191 490331		
dra. no. 0296/1A	date MAR 96	drawn by