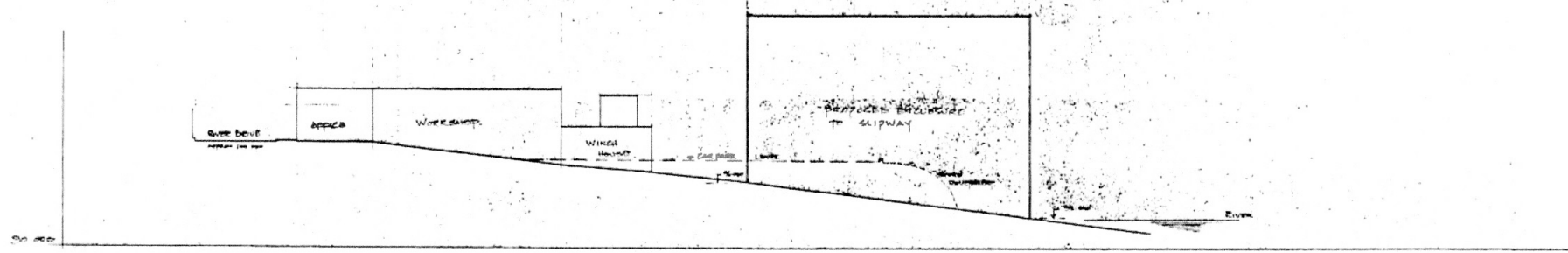
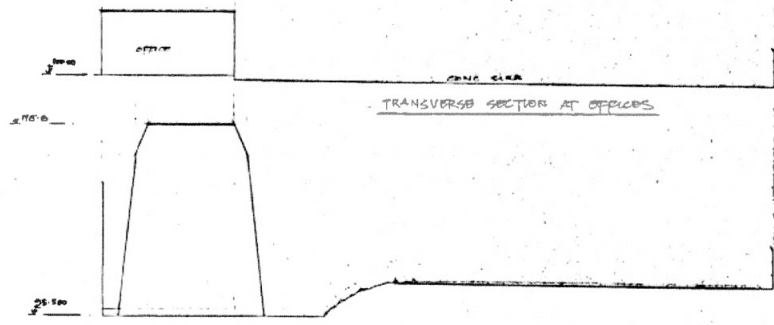


ST/0242/96/UD



LONGITUDINAL SECTION THROUGH SITE



TRANSVERSE SECTION AT ENCLOSURE

APPROVED BY
 DATE
 MODIFICATIONS
 RECEIVED
 4/6/96

RIVER DRIVE SOUTH SHIELDS	
TYNE SUP & ENGINEERING	
SECTIONS	
SCALE	1:200
MAUGHAN REYNOLDS & PARTNERS CONSULTING ENGINEERS	
15 ROBERT TERRACE GATEHEAD TYNE & WEAR NE15 1JU TEL: No 0191 478222 FAX No 0191 480221	
DRG NO:	8296/2
DATE	11/11/96
DRAWN BY	[Signature]