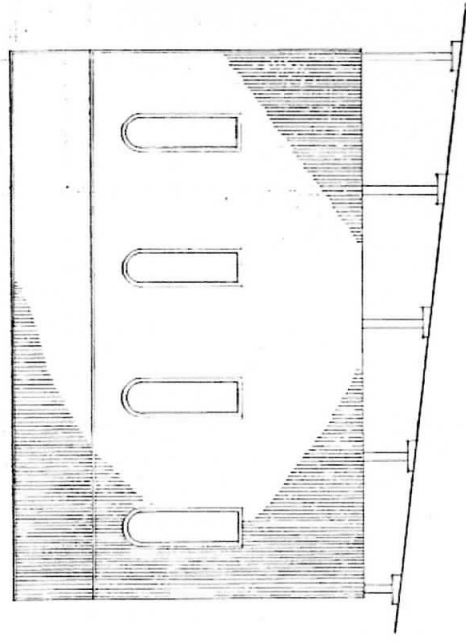
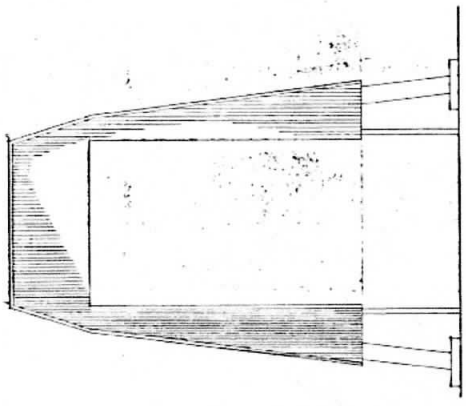


ST/0242/96/48

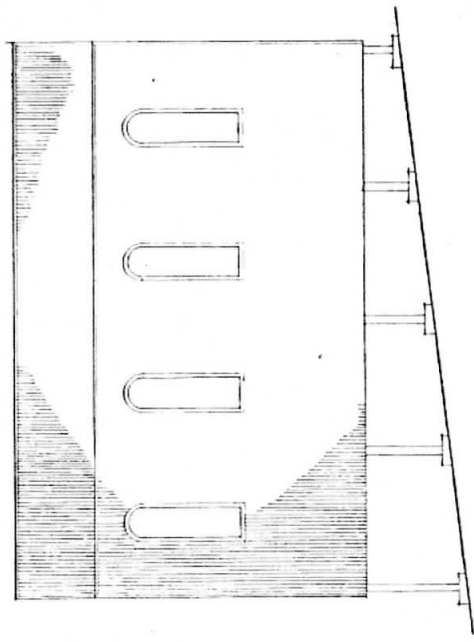
© THIS DRAWING IS THE COPYRIGHT DESIGN OF MAUGHAN REYNOLDS & PARTNERS AND MUST NOT BE REPRODUCED IN WHOLE OR IN PART OR USED FOR ANY PURPOSES WITHOUT PERMISSION



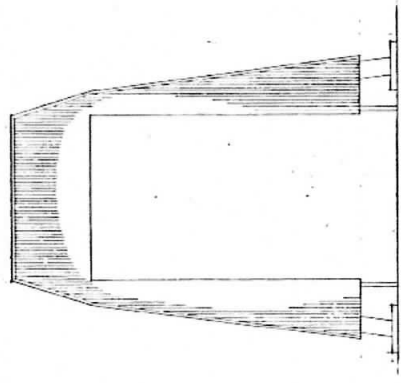
EAST ELEVATION



NORTH ELEVATION



WEST ELEVATION



SOUTH ELEVATION

APPROVED BY  
TREVOR WOODWARD  
ARCHITECT

REV | DATE | MODIFICATIONS  
25/06/96  
SUNNY, ENDS OF SOUTH PANELS.

TREWSLIP ENGINEERING  
ELEVATIONS.

SCALE 1:100

MAUGHAN REYNOLDS & PARTNERS  
CONSULTING ENGINEERS

15 WOODS TERRACE, DUNDEE  
DUNDEE, SCOTLAND DD1 1TA

DATE 25/6/96  
DRAWN BY 8396/4