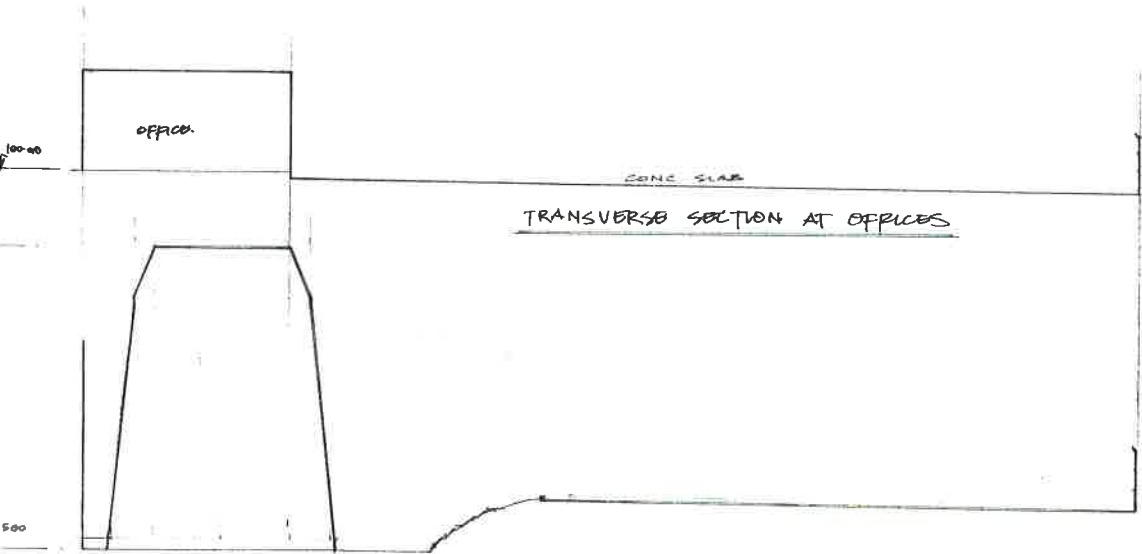


LONGITUDINAL SECTION THROUGH SITE



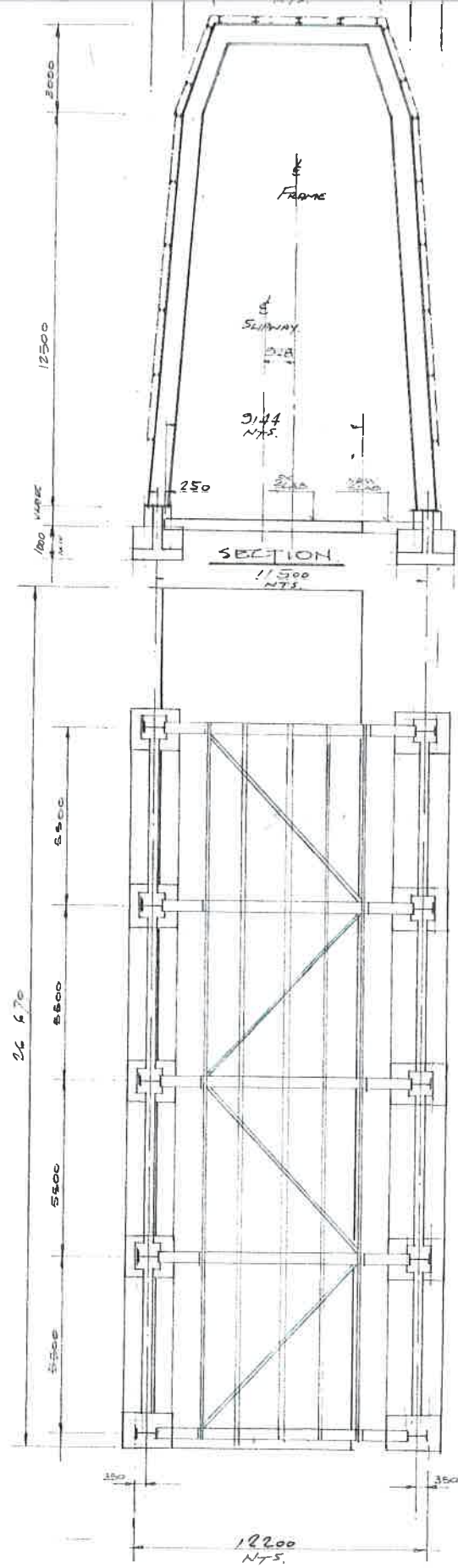
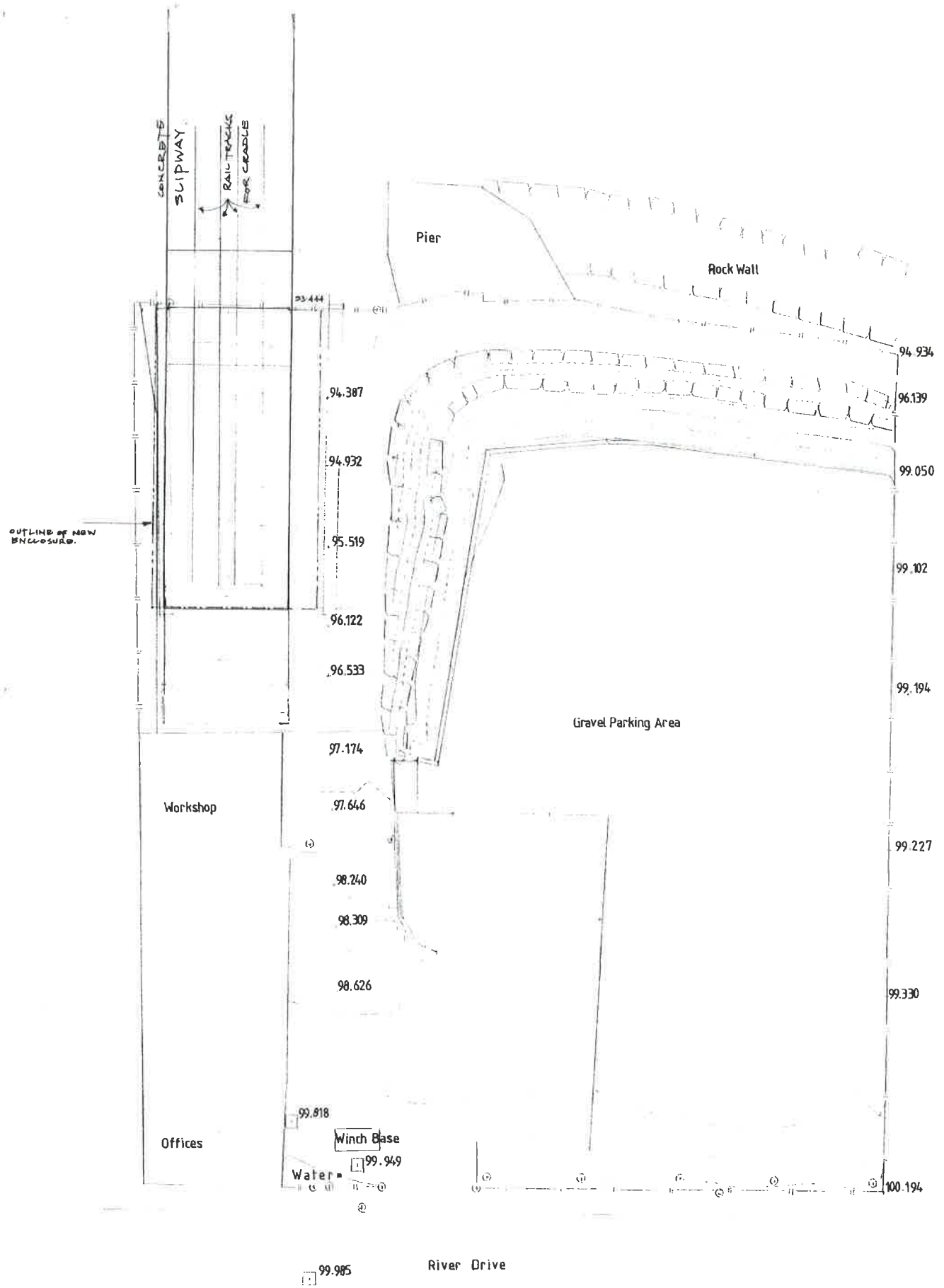
TRANSVERSE SECTION AT OFFICES

TRANSVERSE SECTION AT ENCLOSURE

SOUTH TYNESIDE A.S.C.
- 6 SEP 2013
AREA PLANNING

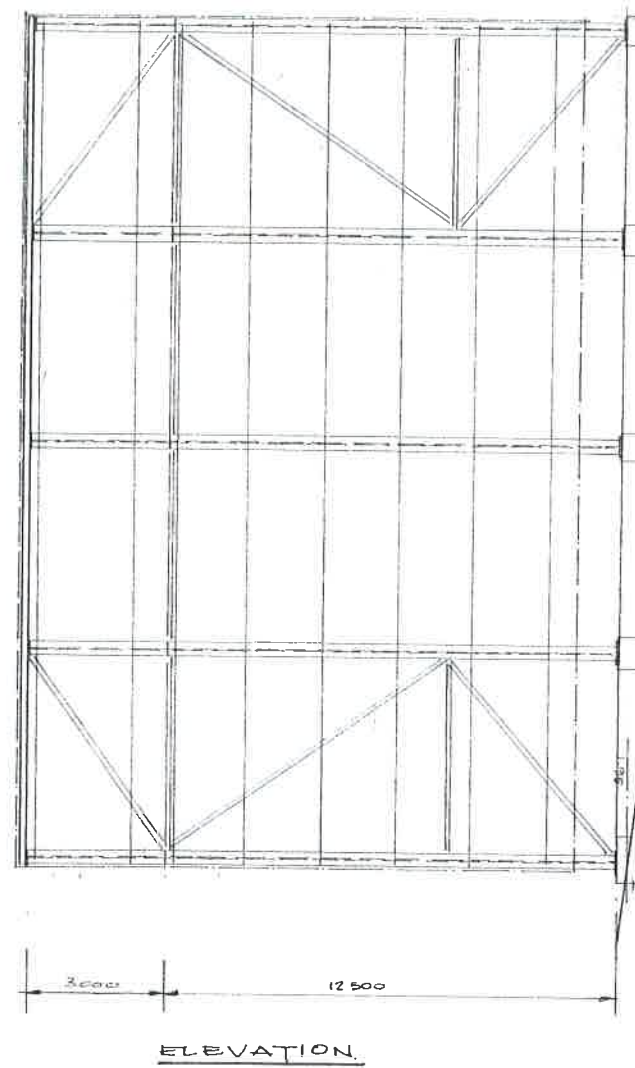
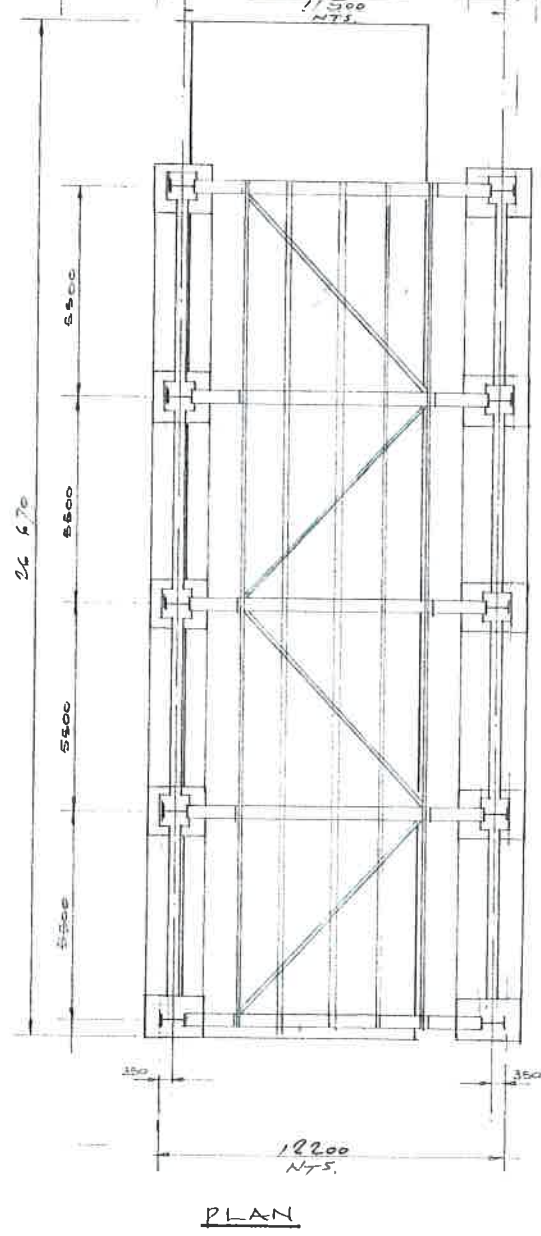
REV	DATE	MODIFICATIONS
address RIVER DRIVE SOUTH SHIELDS		
client: TYNE SLIP & ENGINEERING		
title: SECTIONS		
SCALES	1:200	

MAUGHAN REYNOLDS & PARTNERS
CONSULTING ENGINEERS



NOTES

1. MAIN FRAME 886x254x140 UB
- ALL BRACING 114x57x6.3 CHS
- FURLINS AND SHEETING RAHS @ MAX 2000 C/S 152x89x16 UB
2. ALL STEEL PAINTED TWO COATS HIGH BUILD ZINC PHOSPHATE.
3. SHEETING TO BE SINGLE SKIN MIDLINE B60R OR SIMILAR PLASTIC COATED - COLOUR 1B C37.
4. BATE PLATES 450x20x700
5. CONCRETE BASES TO BE C300. MIN COMENT CONTENT 300kg/m³



REV	DATE	MODIFICATIONS
B	16/5/17	FOUNDATIONS AMENDED ALL FRAMES IDENTICAL
A	9/1/16	DIMENSIONS OF FRAME AMENDED
address RIVER DRIVE SOUTH SHIELDS		
client: TYNE SLIP & ENGINEERING		
Title: GENERAL ARRANGEMENT.		

SCALES 1:200 & 1:100

MAUGHAN REYNOLDS & PARTNERS
CONSULTING ENGINEERS

15 REGENT TERRACE GATESHEAD
TYNE & WEAR NE11 1LU
TEL. No. 0191 4783255 FAX. No. 0191 4900331



dra: MAR '16
drawn by: [Signature]

dra: 0296/1 B