

REVISION DATE / DESCRIPTION

REVISION 'A' - 08.02.17  
SOUTHERN RED LINE BOUNDARY REVISED

567700M

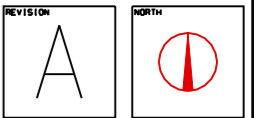
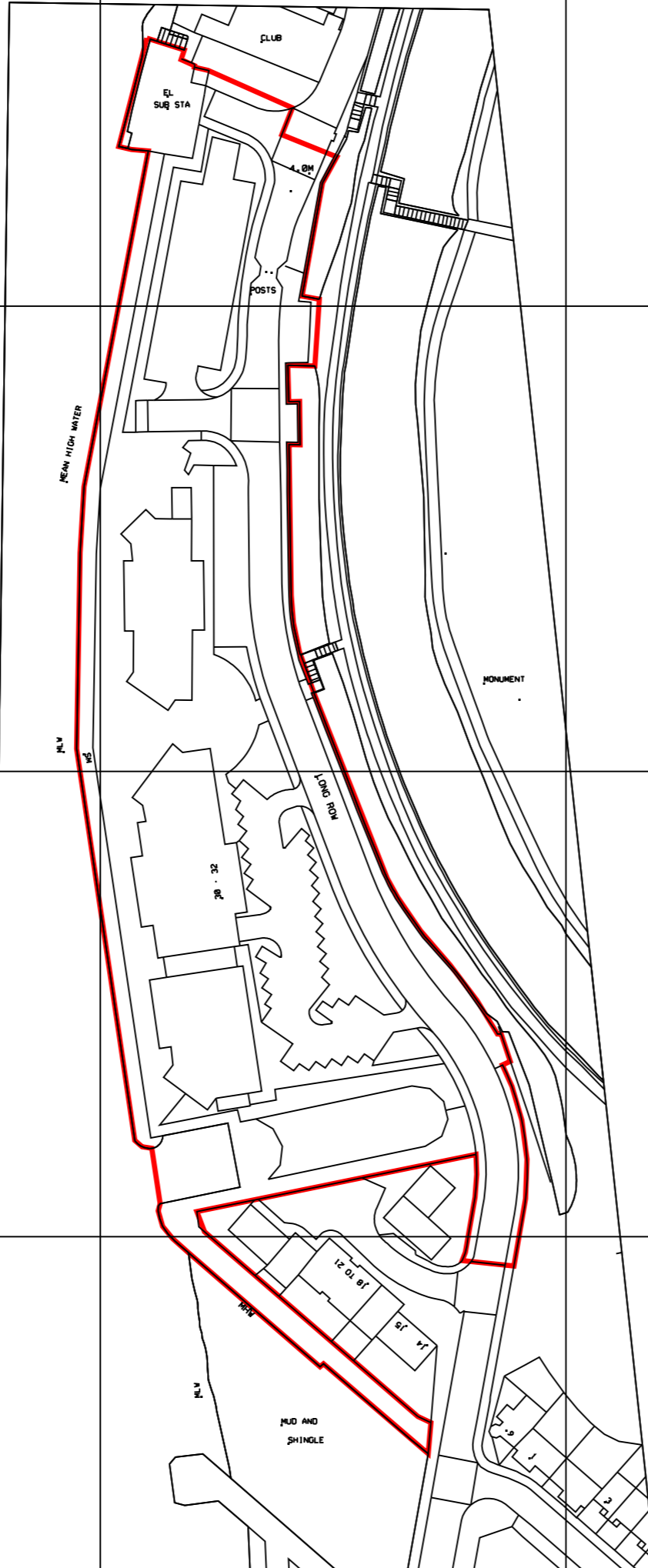
567700M

567600M

567600M

567500M

567500M



STAGE: PLANNING

PROJECT  
CONVERSION OF OFFICE BLOCK  
INTO RESIDENTIAL APARTMENTS  
AT MARKET DOCK, LONG ROW,  
SOUTH SHIELDS, NE33 1JA

DRAWING  
SITE LOCATION PLAN

PROJECT NO.	DRAWING NO.	REVISION
2924	C-00	A

DATE	SCALE	DRAWN BY
OCT '15	1:12500A3	DJB

MARIO MINCHELLA ARCHITECTS

UNIT 4, WITNEY WAY,  
HI-TECH VILLAGE,  
WILSON BUSINESS PARK,  
TINE AND NEAR  
HELSBY  
T: 0191 3882227  
M: 07830 814161  
E: INFO@M-A.NET



THIS DRAWING IS  
COPYRIGHT OF  
MARIO MINCHELLA LIMITED

NOT TO BE SCALE  
ALL DIMENSIONS TO  
BE CHECKED ON SITE

SITE LOCATION PLAN